

Cabaret®



Best-performing lineup of solid colors and bicolors with early flowering. Most flower with a 10.5-hour day length. Stays open and in flower under low light. Early flowering; target production weeks prior to Week 5 (South) and Week 14 (North). Works well in 4.5 to 6-in. (11 to 15-cm) pots up to large baskets.

Novel pattern features a star center.

General & Information

Height:	Spread:	Exposure:
6-10" (15-25cm)	10-12" (25-30cm)	Sun

Propagation Guide

Tray Sizes (cells/tray):	Rooting Hormone:	Average Days with Mist:	Pinch: Yes	Average Propagation Time (weeks):	Comments:
50, 72, 84, 105	No	6-8		3-4	Avoid wide fluctuations in soil moisture. Apply preventative fungicide drench at 18-21 days after sticking.

Finishing

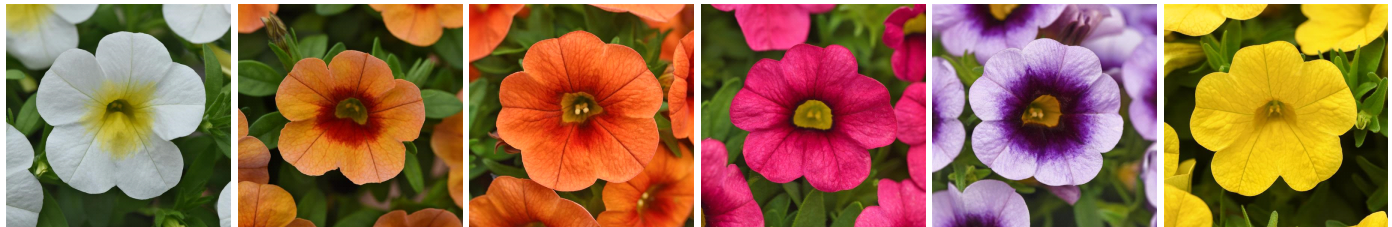
Soil pH:	Light Levels (fc):	Temperature Day:	Temperature Night:	Fertilization (ppm N):	No. of Pinches:	Plant Growth Regulators (S) = spray / (D) = drench:	Pests:	Diseases:	Comments:
5.4-5.8	5,000-8,000	71-76°F (22-24° C)	50-58°F (10-14° C)	225-300	1-2	Use daminozide(S) 2,500-5,000 ppm, paclobutrazol(D) 3-8 ppm or ethephon(S) 300-500 ppm applied 1 time up to 3 times for large baskets to maintain habit as needed.	Thrips, aphids, leafminers	Root rot	Cooler air temperatures and high light will reduce or eliminate any need for plant growth regulators. Maintain pH at 5.2-5.8 to optimize plant health. Crop times will be shortest as days lengthen in Spring. Apply preventative broad-spectrum fungicide drench early (7-10 days after transplant). Avoid saturated media and excessive feed levels.

Crop Time

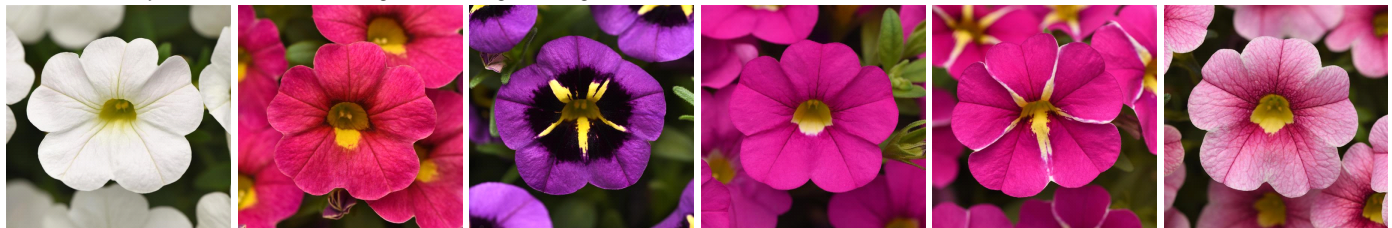
4- to 5-inch (10- to 13-cm) Pots, Quarts :	6-inch (15-cm) Pots, Gallons:	10- to 12-inch (25- to 30-cm) Tubs or Baskets:
1 ppp, 6-9 weeks	1-2 ppp, 7-11 weeks	3-5 ppp, 8-12 weeks

NOTE: Growers should use the information presented here as guidelines only. Ball FloraPlant recommends that growers conduct a trial of products under their own conditions. Crop times will vary depending on the climate, location, time of year, and greenhouse environmental conditions. It is the responsibility of the grower to read and follow all the current label directions relating to the products. Nothing herein shall be deemed a warranty or guaranty by Ball FloraPlant of any products listed herein. Ball FloraPlant's terms and conditions of sale shall apply to all products listed herein.

Other Cabaret® Varieties



New Calibrachoa Cabaret® Frosty Lemon **New** Calibrachoa Cabaret® Orange Kiss Calibrachoa Cabaret® Bright Orange Calibrachoa Cabaret® Hot Pink 26 Calibrachoa Cabaret® Lavender Kiss Calibrachoa Cabaret® Yellow



Calibrachoa Cabaret® Bright White Calibrachoa Cabaret® Diva Pink Calibrachoa Cabaret® Midnight Kiss Calibrachoa Cabaret® Pink Calibrachoa Cabaret® Pink Star Calibrachoa Cabaret® Strawberry Parfait



Calibrachoa Cabaret®
Lavender



Calibrachoa Cabaret®
Lemon Yellow



Calibrachoa Cabaret®
Good Night Kiss



Calibrachoa Cabaret®
Light Pink Kiss



Calibrachoa Cabaret®
Orange



Calibrachoa Cabaret®
Red



Calibrachoa Cabaret®
Midnight Blue



Calibrachoa Cabaret®
Neon Rose



Calibrachoa Cabaret®
Sky Blue



Calibrachoa Cabaret®
White



Calibrachoa Cabaret®
Purple



Calibrachoa Cabaret®
Bright Red



Calibrachoa Cabaret®
Deep Yellow



Calibrachoa Cabaret®
Deep Blue



Calibrachoa Cabaret®
Light Pink