

# Cabaret®



Best-performing lineup of solid colors and bicolors with early flowering. Most flower with a 10.5-hour day length. Stays open and in flower under low light. Early flowering; target production weeks prior to Week 5 (South) and Week 14 (North). Works well in 4.5 to 6-in. (11 to 15-cm) pots up to large baskets.

Has a larger flower than Bright Red and flowers earlier.

### General & Information

Height:	Spread:	Exposure:
6-10" (15-25cm)	10-12" (25-30cm)	Sun

### Propagation Guide

Tray Sizes (cells/tray):	Rooting Hormone:	Average Days with Mist:	Pinch: Yes	Average Propagation Time (weeks):	Comments:
50, 72, 84, 105	No	6-8		3-4	Avoid wide fluctuations in soil moisture. Apply preventative fungicide drench at 18-21 days after sticking.

### Finishing

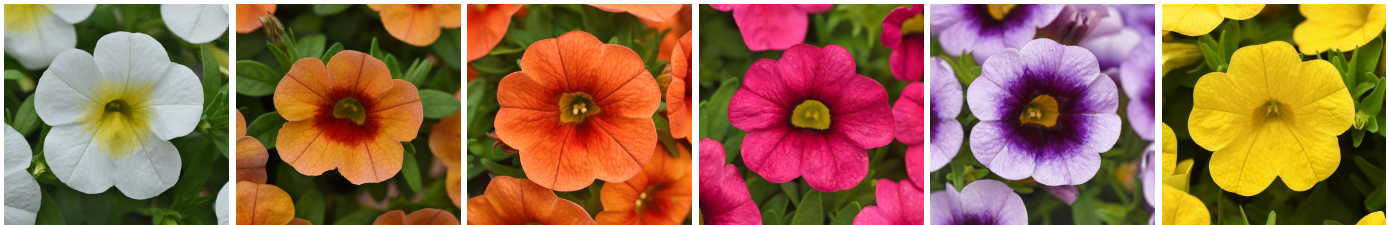
Soil pH:	Light Levels (fc):	Temperature Day:	Temperature Night:	Fertilization (ppm N):	No. of Pinches:	Plant Growth Regulators (S) = spray / (D) = drench:	Pests:	Diseases:	Comments:
5.4-5.8	5,000-8,000	71-76°F (22-24° C)	50-58°F (10-14° C)	225-300	1-2	Use daminozide(S) 2,500-5,000 ppm, paclobutrazol(D) 3-8 ppm or ethephon(S) 300-500 ppm applied 1 time up to 3 times for large baskets to maintain habit as needed.	Thrips, aphids, leafminers	Root rot	Cooler air temperatures and high light will reduce or eliminate any need for plant growth regulators. Maintain pH at 5.2-5.8 to optimize plant health. Crop times will be shortest as days lengthen in Spring. Apply preventative broad-spectrum fungicide drench early (7-10 days after transplant). Avoid saturated media and excessive feed levels.

### Crop Time

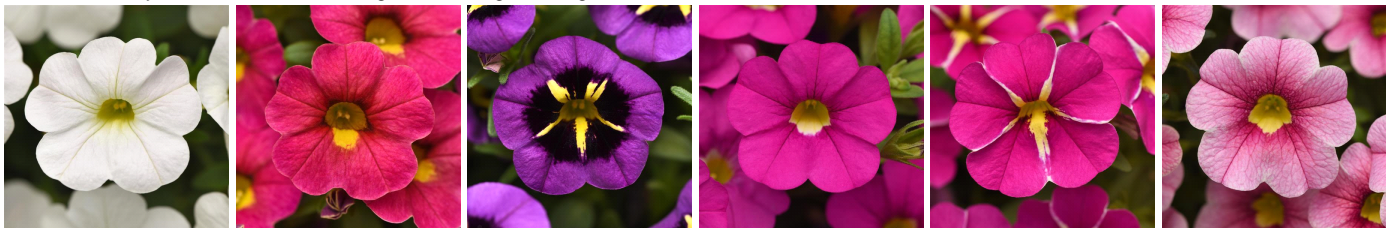
4- to 5-inch (10- to 13-cm) Pots, Quarts :	6-inch (15-cm) Pots, Gallons:	10- to 12-inch (25- to 30-cm) Tubs or Baskets:
1 ppp, 6-9 weeks	1-2 ppp, 7-11 weeks	3-5 ppp, 8-12 weeks

**NOTE:** Growers should use the information presented here as guidelines only. Ball FloraPlant recommends that growers conduct a trial of products under their own conditions. Crop times will vary depending on the climate, location, time of year, and greenhouse environmental conditions. It is the responsibility of the grower to read and follow all the current label directions relating to the products. Nothing herein shall be deemed a warranty or guaranty by Ball FloraPlant of any products listed herein. Ball FloraPlant's terms and conditions of sale shall apply to all products listed herein.

### Other Cabaret® Varieties



**New** Calibrachoa Cabaret® Frosty Lemon    **New** Calibrachoa Cabaret® Orange Kiss    Calibrachoa Cabaret® Bright Orange    Calibrachoa Cabaret® Hot Pink 26    Calibrachoa Cabaret® Lavender Kiss    Calibrachoa Cabaret® Yellow



Calibrachoa Cabaret® Bright White    Calibrachoa Cabaret® Diva Pink    Calibrachoa Cabaret® Midnight Kiss    Calibrachoa Cabaret® Pink    Calibrachoa Cabaret® Pink Star    Calibrachoa Cabaret® Strawberry Parfait



Calibrachoa Cabaret®  
Lavender



Calibrachoa Cabaret®  
Lemon Yellow



Calibrachoa Cabaret®  
Good Night Kiss



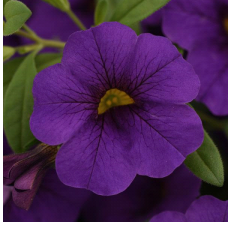
Calibrachoa Cabaret®  
Light Pink Kiss



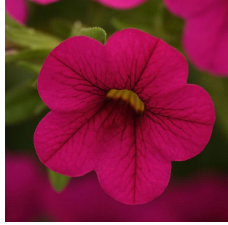
Calibrachoa Cabaret®  
Orange



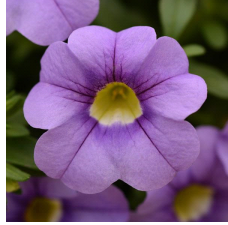
Calibrachoa Cabaret®  
Red



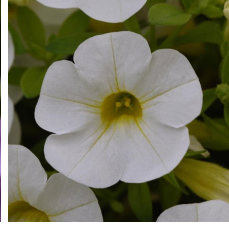
Calibrachoa Cabaret®  
Midnight Blue



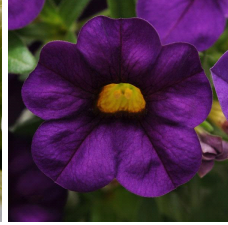
Calibrachoa Cabaret®  
Neon Rose



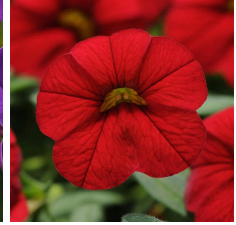
Calibrachoa Cabaret®  
Sky Blue



Calibrachoa Cabaret®  
White



Calibrachoa Cabaret®  
Purple



Calibrachoa Cabaret®  
Bright Red



Calibrachoa Cabaret®  
Deep Yellow



Calibrachoa Cabaret®  
Deep Blue



Calibrachoa Cabaret®  
Light Pink