

# SolarTower™



*The first-ever self-climbing Ipomoea!* SolarTower climbs very quickly and fills a large pot on a quick turn. Climbing plant is ideal for use with a trellis, as a topiary or on a vertical wall planting. Recommended pot size is 1 gallon and up, with some kind of trellis, making a huge impact at retail. Also recommended as a thriller in mixed combos, climbing up a small bamboo stick. Easy for the grower to maintain and produce, as it should not need any trimming, PGRs or training to climb the trellis. Provides instant garden décor for consumers.

## General & Information

<b>Height:</b>	<b>Spread:</b>	<b>Exposure:</b>
48-84" (122-213cm)	36-48" (91-122cm)	Sun

## Propagation Guide

Tray Sizes (cells/tray):	Rooting Hormone:	Average Days with Mist:	Pinch: Optional	Average Propagation Time (weeks):	Comments:
50, 72, 84, 105	No	3-4		3-4	Move rooted cuttings off mist quickly to avoid stretch. Ipomoea URC do not like to be stored, so stick immediately. Cooling cuttings can actually do damage, so it is recommended that, if you do store cuttings, do not put them in a cooler, and maintain temperatures at 55-60°F (13-16°C).

## Finishing

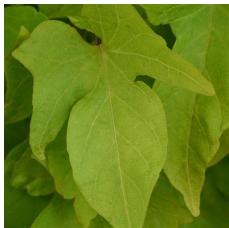
Soil pH:	Light Levels (fc):	Temperature Day:	Temperature Night:	Fertilization (ppm N):	No. of Pinches:	Plant Growth Regulators (S) = spray / (D) = drench:	Pests:	Diseases:	Comments:
5.8- 6.2	6,000- 10,000	70-75°F (21-24° C)	65-70°F (18-21° C)	175-225	0-1	Generally not required. B-Nine(S) 2,500-3,500 ppm can be effective at controlling growth.	Aphids, whitefly, spider mites	Pseudomonas	Avoid cold and wet conditions. In order for the product to climb pots, it needs to have a stake or trellis included.

## Crop Time

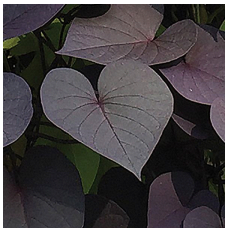
<b>4- to 5-inch (10- to 13-cm) Pots, Quarts :</b>	<b>6-inch (15-cm) Pots, Gallons:</b>	<b>10- to 12-inch (25- to 30-cm) Tubs or Baskets:</b>
1 ppp, 4-5 weeks	1-3 ppp, 5-6 weeks	3-5 ppp, 8-10 weeks

**NOTE:** Growers should use the information presented here as guidelines only. Ball Floraplant recommends that growers conduct a trial of products under their own conditions. Crop times will vary depending on the climate, location, time of year, and greenhouse environmental conditions. It is the responsibility of the grower to read and follow all the current label directions relating to the products. Nothing herein shall be deemed a warranty or guaranty by Ball Floraplant of any products listed herein. Ball Floraplant's terms and conditions of sale shall apply to all products listed herein.

## Other SolarTower™ Varieties



Ipomoea SolarTower™  
Lime



Ipomoea SolarTower™  
Black