

MegaCopa™ Bacopa



This series of bacopa is notable for its well-branched habits, large flowers and improved heat performance. Controlled habit is grower-friendly and offers better centerfill than other bacopas. Largest flower size in the industry, with showy blooms that cover the plant, driving impulse sales at retail.

Provides garden performance to match Pink Improved.

General & Information

Height:	Spread:	Exposure:
4-6" (10-15cm)	12-18" (30-46cm)	Sun

Propagation Guide

Tray Sizes (cells/tray):	Rooting Hormone:	Average Days with Mist:	Pinch:	Average Propagation Time (weeks): (see note)	Comments:
50, 72, 84, 105	No	6-8	Yes	1-3	Stick 1 cutting per cell.

Finishing

Soil pH:	Light Levels (fc):	Temperature Day:	Temperature Night:	Fertilization (ppm N):	No. of Pinches:	Plant Growth Regulators (S) = spray / (D) = drench:	Pests:	Diseases:	Comments:
5.4-5.8	4,000-8,000	65-76°F (18-24°C)	56-61°F (13-16°C)	175-225	1-2	Generally not needed. B-Nine spray 1,000-1,500 ppm can be used sparingly to tone and control spread. Florel spray 150-200 ppm will reduce early flowering and increase branching.	Thrips, aphids	Root rot, Botrytis	Pinch as needed to shape. Grow Bacopa bright and cool to maximize branching and encourage best possible habit. Test soil regularly for high pH/iron deficiency. Refer to the MegaCopa Series Bacopa Grower Facts at ballfloraplant.com for detailed culture information.

Crop Time

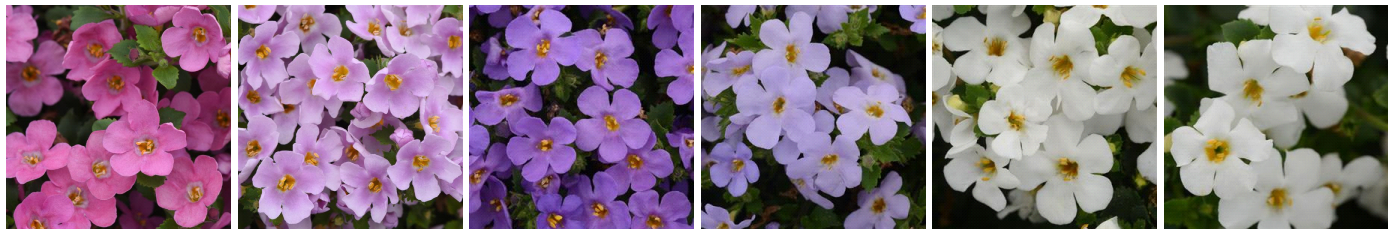
4- to 5-inch (10- to 13-cm) Pots, Quarts :	6-inch (15-cm) Pots, Gallons:	10- to 12-inch (25- to 30-cm) Tubs or Baskets:
1-2 ppp, 5-7 weeks	2-3 ppp, 7-10 weeks	4-5 ppp, 8-12 weeks

1. Propagation time:

Average propagation time for perennials includes 3-5 weeks to bulk-up the liner before beginning cold treatment when started in late Summer or early Autumn.

NOTE: Growers should use the information presented here as guidelines only. Ball FloraPlant recommends that growers conduct a trial of products under their own conditions. Crop times will vary depending on the climate, location, time of year, and greenhouse environmental conditions. It is the responsibility of the grower to read and follow all the current label directions relating to the products. Nothing herein shall be deemed a warranty or guaranty by Ball FloraPlant of any products listed herein. Ball FloraPlant's terms and conditions of sale shall apply to all products listed herein.

Other MegaCopa™ Varieties



New MegaCopa™ Pink Improved

New MegaCopa™ Pink Shine

MegaCopa™ Blue

MegaCopa™ Sky Blue

MegaCopa™ Versa White

MegaCopa™ White