



Ball Flora Plant  
Research & Development

725 Zenon Way  
Arroyo Grande CA 93420  
(805) 489-0228

# Flame Thrower Best Practices

West Chicago Spring 2017

Ball Flora Plant

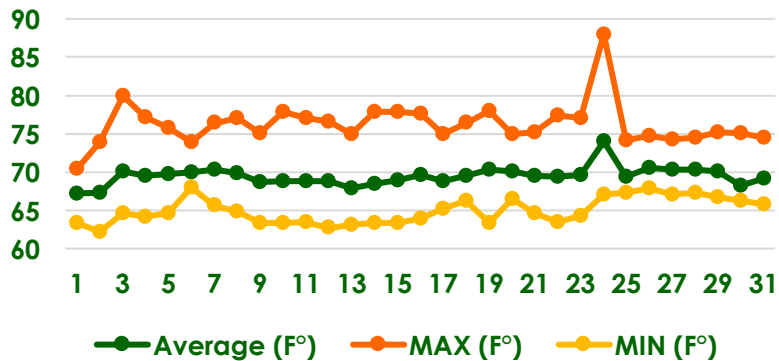
# FlameThrower

## Best Cultural Practice Spring 2017

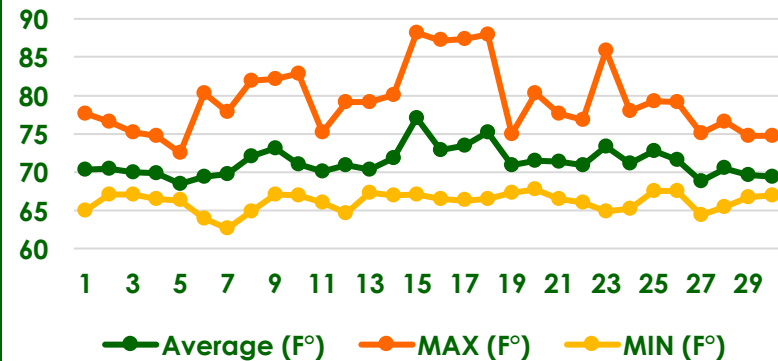
- Tray size: 102
  - **Stick: Week 8**
  - Pinch: Week 11
  - Transplant: Week 12
  - PGR Application: Week 14
  - Finish: Week 19
  - **Total crop time: 11 weeks**
  - Soil pH: 5.8 (ideal pH 5.8-6.2)
  - Fertilizer 17-5-17 (200 ppm N)
  - Container Size: 1 Quart
- **Treatments:**
    1. Control, No Pinch/No PGR
    2. Pinch/No PGR
    3. No Pinch, B-Nine 2,500/Cycocel 750 ppm
    4. Pinch, B-Nine 2,500/Cycocel 750 ppm
    5. No Pinch, Sumagic 5 ppm
    6. Pinch, Sumagic 5 ppm

# Average Temperatures

March Temperatures - 2017

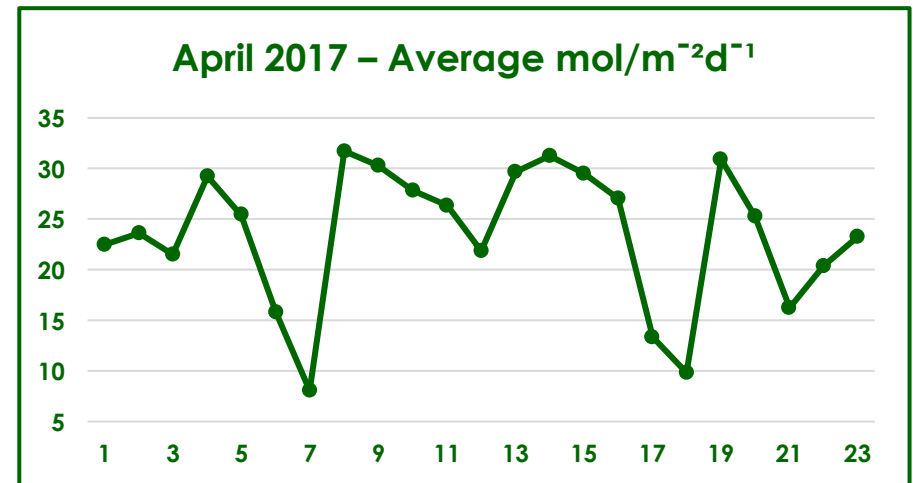
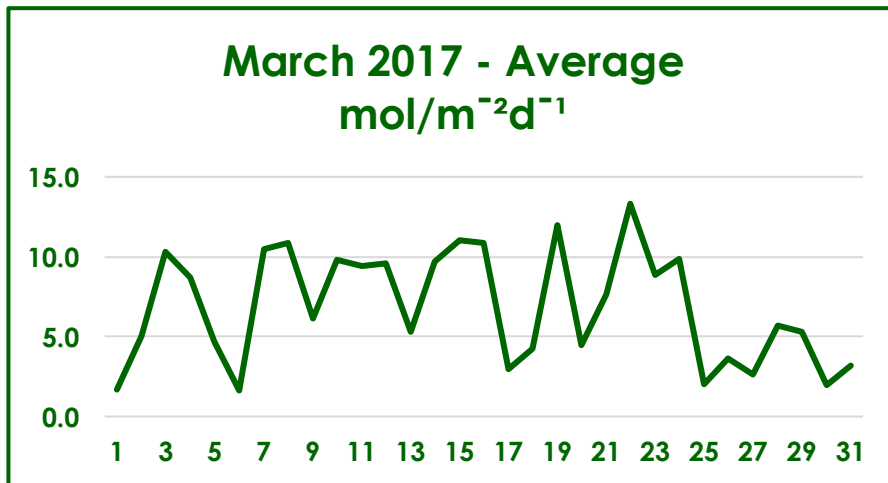


April Temperatures - 2017



Average Temperatures			
Month	Average (°F)	Max (°F)	Min (°F)
March	69.4 °F	88 °F	62.2 °F
April	71.2 °F	88.2 °F	62.6 °F

# Average Moles



## Average Moles:

- March: 6.9 mol/m<sup>-2</sup>d<sup>-1</sup>
- April: 8.6 mol/m<sup>-2</sup>d<sup>-1</sup>

# 7 Weeks After Transplant Control (No Pinch / No PGR)



FlameThrower Chipotle



FlameThrower Chilli  
Pepper



FlameThrower Spiced  
Curry



FlameThrower Salsa  
Verde



FlameThrower Habanero



FlameThrower Serano

# 7 Weeks After Transplant Pinch/No PGR



FlameThrower Chipotle



FlameThrower Chilli  
Pepper



FlameThrower Spiced  
Curry



FlameThrower Salsa  
Verde



FlameThrower Habanero



FlameThrower Serano

❖ Pinched one week prior to transplant.



# 7 Weeks After Transplant

Pinch, B-Nine 2,500/Cycocel 750 ppm



FlameThrower Chipotle



FlameThrower Chilli  
Pepper



FlameThrower Spiced  
Curry



FlameThrower Salsa  
Verde



FlameThrower Habanero



FlameThrower Serano

❖ PGR applied 2 weeks after transplant.

# FlameThrower Best Practice

- FlameThrower Coleus were successfully grown with **No pinch/No PGR.**
- Pinching one week prior to transplant increased branching, but is not needed.
- No pinch and PGR is needed!
- ❖ If desired or **growing pot tight**, a **Pinch** one week prior to transplant and a **B-Nine 2,500 ppm/Cycocel 750 ppm spray**, or low **Sumagic rate** application 2 weeks after transplant will provide some control.