



MegaCopa White Single vs. Double Stick

Spring 2017

Ball Flora Plant
Research & Development

622 Town Road
West Chicago, IL
60185-2698

BallFloraPlant

MegaCopa Single Stick vs. Double Stick 2017

Data Points

- Tray Size: 78 (30 mm liner)
- Stick Date: Week 1
- Pinch: Week 5
- Transplant: Week 7
- Finish: Week 11
- Total Crop Time: 10 Weeks
- Fertilizer 14-4-14 (200 ppm N)
- 3ppm Bonzi spray to liner in propagation stage week 6

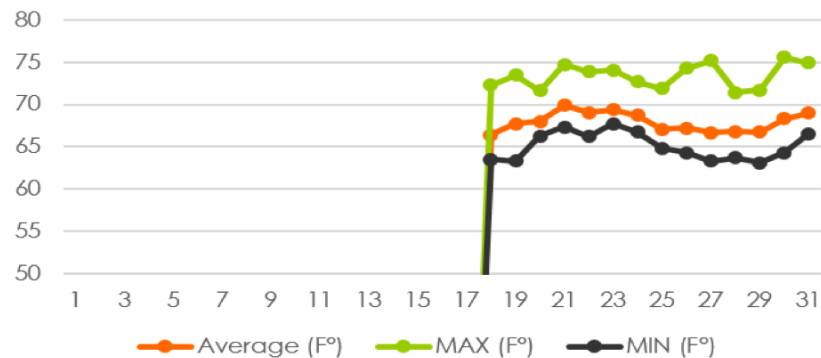


Which one is single? Can you tell?

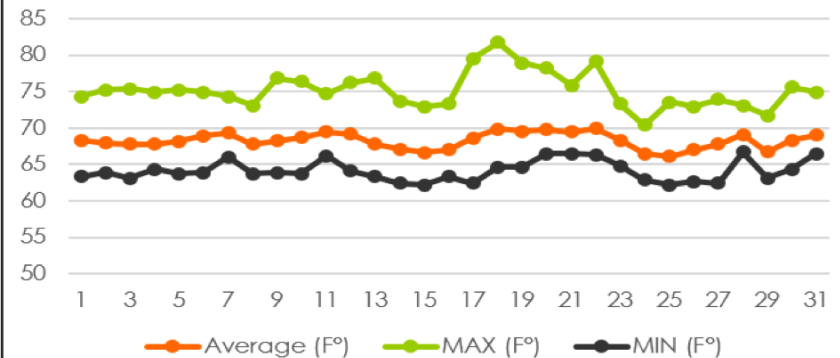
Average Temperatures

Jan Avg. 67.8°, Max 75.6°, Min 63.1° **Feb** Avg. 68.2°, Max 81.7°, Min 62.2°
Mar Avg. 68.7°, Max 88.8°, Min 62.6°

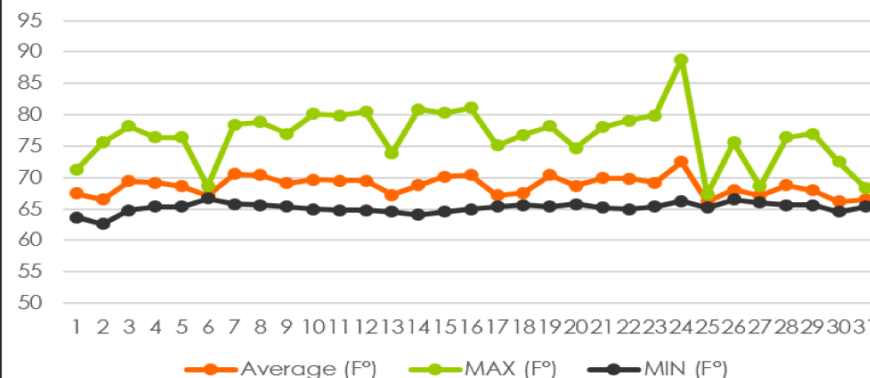
January Temperature 2017



February Temperatures 2017



March Temperatures 2017



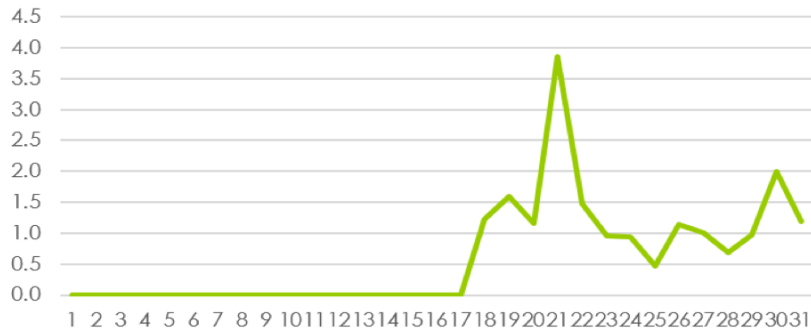
Average moles

January: 1.5

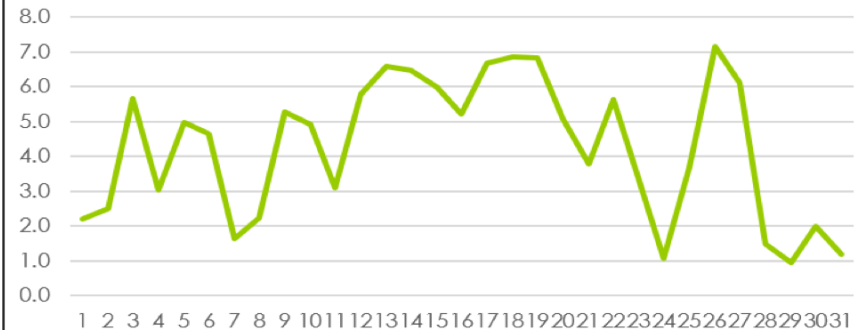
February: 4.3

March: 9.2

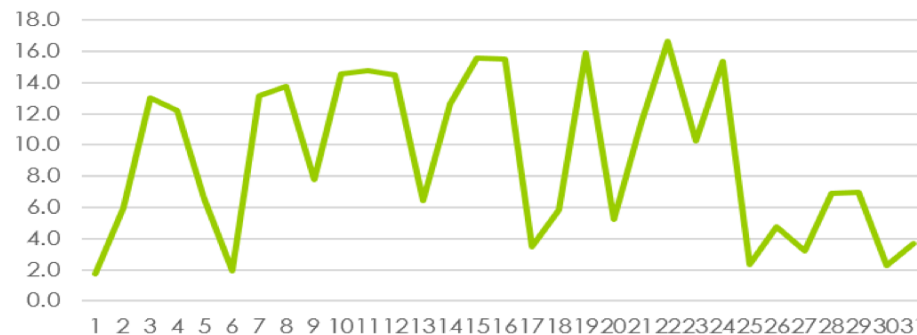
**January 2017 - Average
mol/m⁻²d⁻¹**



**February 2017 - Average
mol/m⁻²d⁻¹**



**March 2017 - Average
mol/m⁻²d⁻¹**



MegaCopa White

6 weeks after stick

Single Stick



Double Stick



MegaCopa White

5 Weeks After Transplant

Single Stick

Double Stick



MegaCopa White

5 Weeks After Transplant

Single Stick



Double Stick



Bonzi 3ppm 3 weeks after Transplant

Single Stick Vs. Double Stick

- MegaCopa White was successfully grown from a single stuck liner.
- When compared to other commercial varieties, currently sold as single stick items, MegaCopa White's habit, branching, and growth was comparable and similar.
- With the right growth regime, MegaCopa White and other commercial varieties can be successfully grown from a single stuck liner.

Single

Double

