

Cabaret® Calibrachoa



Cabaret carries the best-performing lineup of solid colors and exciting bicolors with early flowering!

Most varieties flower with a 10.5-hour day length, and stay open and in flower under low light conditions – a big plus at retail.

All new genetics flower early when produced for target production weeks prior to Week 5 in the South and Week 14 in the North.

Works well in 4.5 to 6-in. (11 to 15-cm) pots up to large baskets.

Novelty addition to the Cabaret series. Deep purple shimmering flowers have an interesting star pattern.

General & Information

Height:	Spread:	Exposure:
6-10" (15-25cm)	10-12" (25-30cm)	Sun

Propagation Guide

Tray Sizes (cells/tray):	Rooting Hormone:	Average Days with Mist:	Pinch: Yes	Average Propagation Time (weeks):	Comments:
50, 72, 84, 105	No	6-8		3-4	Avoid wide fluctuations in soil moisture. Apply preventative fungicide drench at 18-21 days after sticking.

Finishing

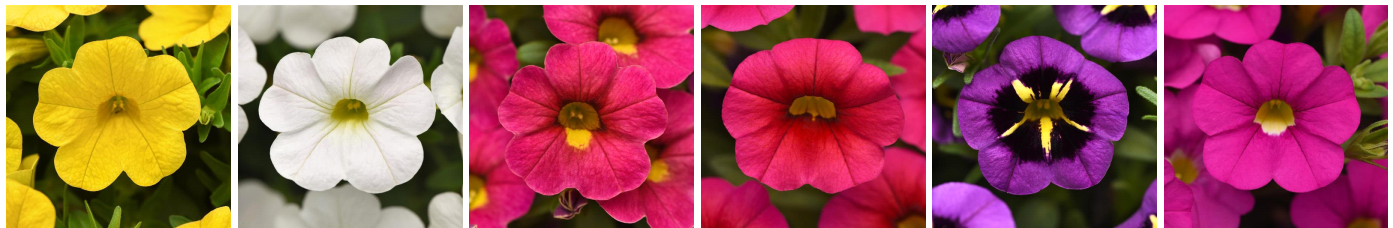
Soil pH:	Light Levels (fc):	Temperature Day:	Temperature Night:	Fertilization (ppm N):	No. of Pinches:	Plant Growth Regulators (S) = spray / (D) = drench:	Pests:	Diseases:	Comments:
5.4- 5.8	5,000- 8,000	71-76°F (22-24° C)	50-58°F (10-14° C)	225-300	1-2	Use B-Nine(S) 2,500- 5,000 ppm, Bonzi(D) 3-8 ppm or Florel(S) 300-500 ppm applied 1 time up to 3 times for large baskets to maintain habit as needed.	Thrips, aphids, leafminers	Root rot	Cooler air temperatures and high light will reduce or eliminate any need for plant growth regulators. Maintain pH at 5.2- 5.8 to optimize plant health. Crop times will be shortest as days lengthen in Spring. Apply preventative broad-spectrum fungicide drench early (7-10 days after transplant). Avoid saturated media and excessive feed levels.

Crop Time

4- to 5-inch (10- to 13-cm) Pots, Quarts :	6-inch (15-cm) Pots, Gallons:	10- to 12-inch (25- to 30-cm) Tubs or Baskets:
1 ppp, 6-9 weeks	1-2 ppp, 7-11 weeks	3-5 ppp, 8-12 weeks

NOTE: Growers should use the information presented here as guidelines only. Ball FloraPlant recommends that growers conduct a trial of products under their own conditions. Crop times will vary depending on the climate, location, time of year, and greenhouse environmental conditions. It is the responsibility of the grower to read and follow all the current label directions relating to the products. Nothing herein shall be deemed a warranty or guaranty by Ball FloraPlant of any products listed herein. Ball FloraPlant's terms and conditions of sale shall apply to all products listed herein.

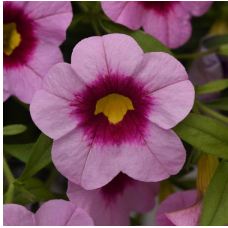
Other Cabaret® Varieties



New Cabaret® Yellow Improved Cabaret® Bright White Cabaret® Diva Pink Cabaret® Hot Rose Cabaret® Midnight Kiss Cabaret® Pink



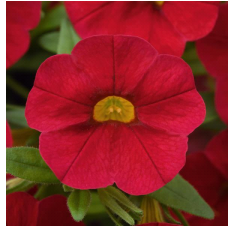
Cabaret® Pink Star Cabaret® Strawberry Parfait Cabaret® Lavender Cabaret® Lemon Yellow Cabaret® Diva Orange Cabaret® Good Night Kiss



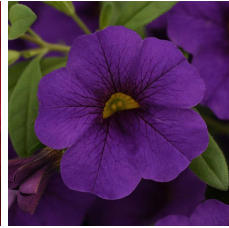
Cabaret® Light Pink
Kiss



Cabaret® Orange



Cabaret® Red



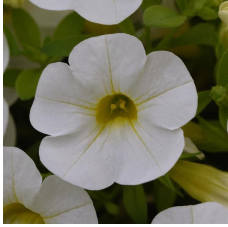
Cabaret® Midnight Blue



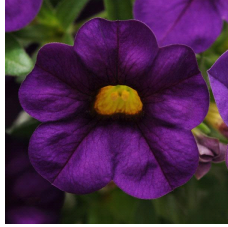
Cabaret® Neon Rose



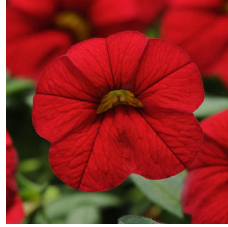
Cabaret® Sky Blue



Cabaret® White



Cabaret® Purple



Cabaret® Bright Red



Cabaret® Deep Yellow



Cabaret® Deep Blue



Cabaret® Hot Pink



Cabaret® Light Pink